

NHS Acute Trusts Survey of Emergency Departments 2003

Kings Lynn and Wisbech Hospitals NHS Trust

For details on how to interpret these charts and tables, please refer to the document on the patient survey results section of the CHI website. The trusts results are not shown where there are fewer than 30 responses to a question.

Access and waiting

How long did you wait for your priority to be assessed?

Were you told your priority level?

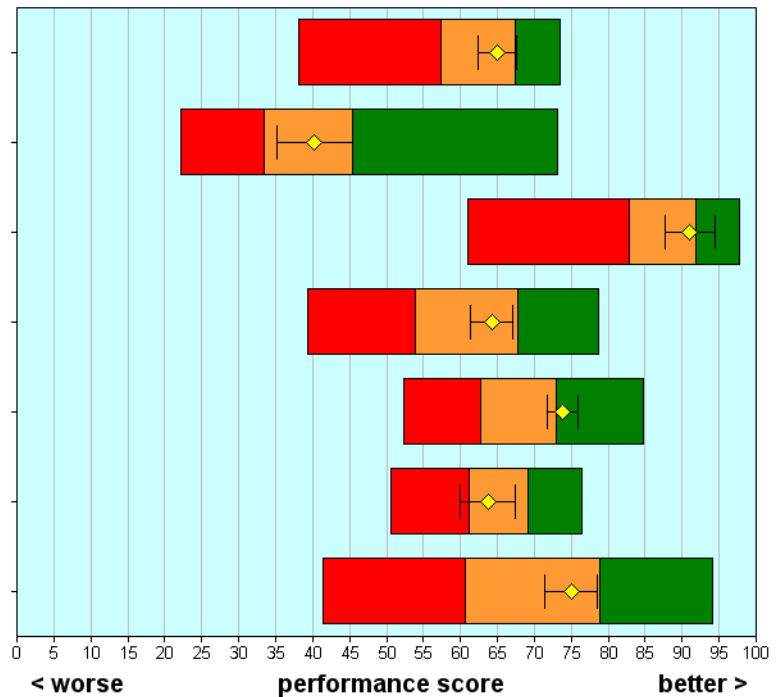
Was the priority system fair?

How long did you wait to be examined?

Overall how long were you in the emergency department?

How long did you wait for tests to be carried out?

How long did you wait to get to a room or ward and bed?



Safe, high quality, coordinated care

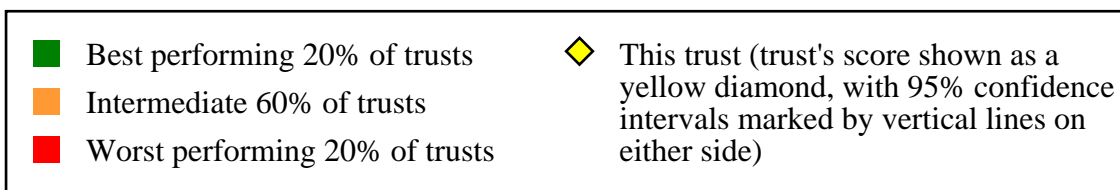
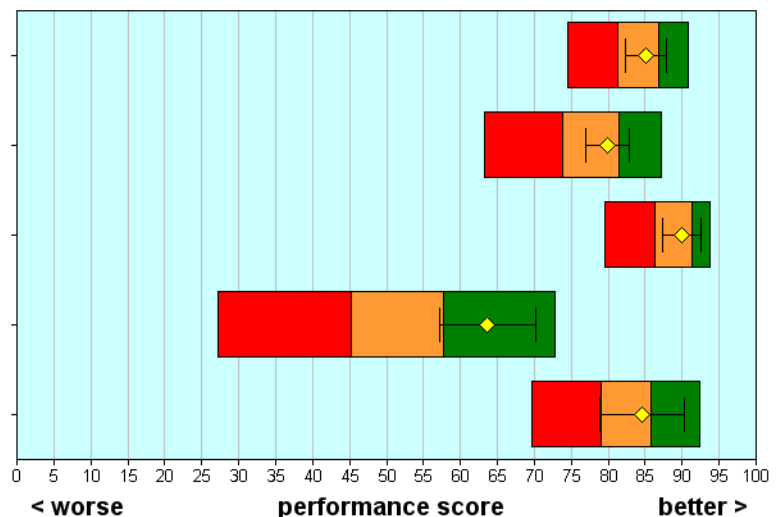
Did you have confidence and trust in the doctors and nurses?

Did doctors and nurses know enough about your condition or treatment?

Did different members of staff give conflicting information?

Were you told about danger signals to watch for after leaving the emergency department?

Were you told who to contact afterwards, if worried about condition/treatment?

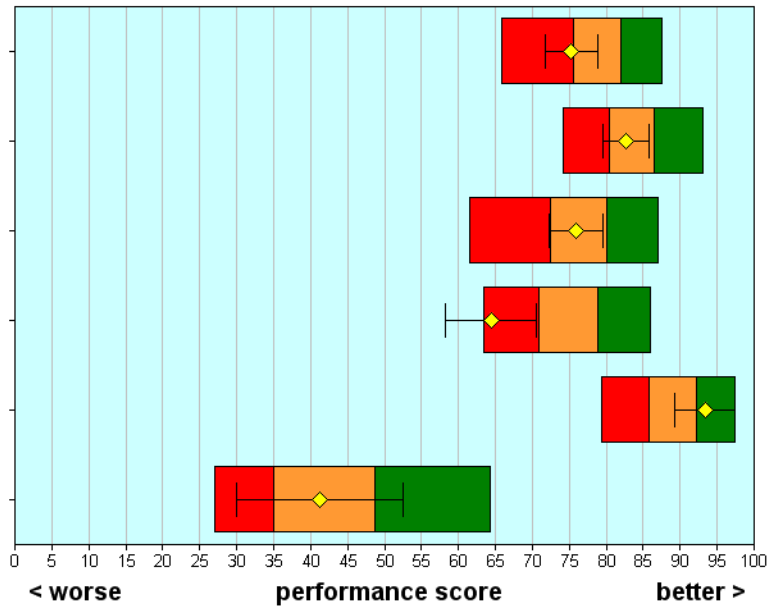


NHS Acute Trusts Survey of Emergency Departments 2003

Kings Lynn and Wisbech Hospitals NHS Trust

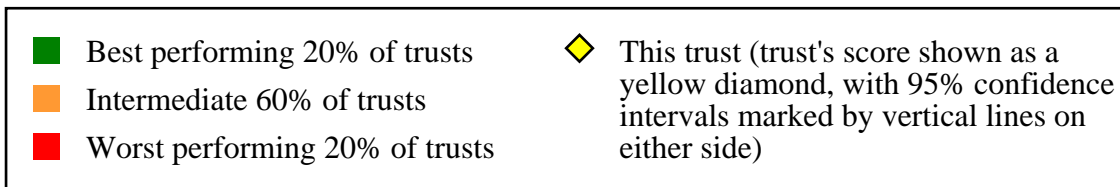
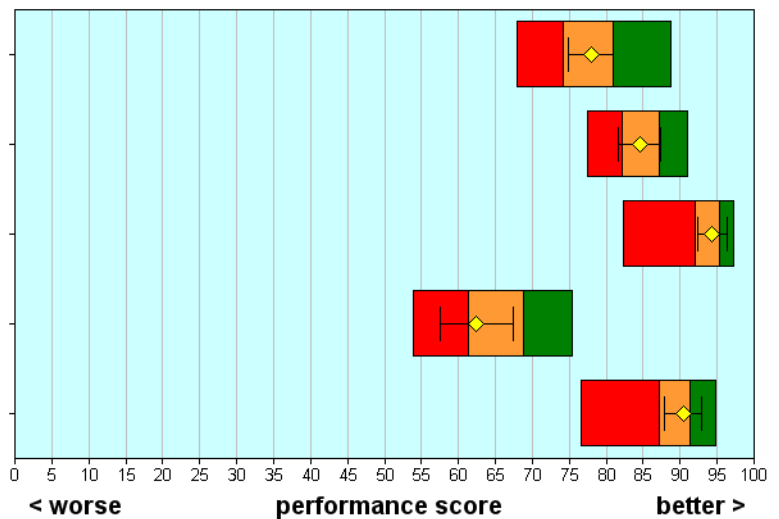
Better information, more choice

- Did a doctor/nurse explain condition/treatment?
- Were you given the right amount of information about your condition/treatment?
- Were you involved in decisions about your care and treatment?
- Were the results of tests explained?
- Were the purposes of medications explained?
- Were you informed of medication side effects to watch for?



Building relationships

- Did you have enough time to discuss your problem with the doctor/nurse?
- Did doctors/nurses listen to what you had to say?
- Were doctors/nurses not telling you things you wanted to know?
- Did a doctor or nurse discuss any anxieties you had about your condition/treatment?
- Did doctors/nurses talk in front of you as if you weren't there?



NHS Acute Trusts Survey of Emergency Departments 2003

Kings Lynn and Wisbech Hospitals NHS Trust

Clean, comfortable, friendly place to be

Were you told how long you would have to wait to be examined?

Were you given enough privacy when discussing your condition/treatment?

Were you given enough privacy when being examined or treated?

How much of the time were you in pain while in the emergency department?

How long did you wait for pain medicine after requesting it?

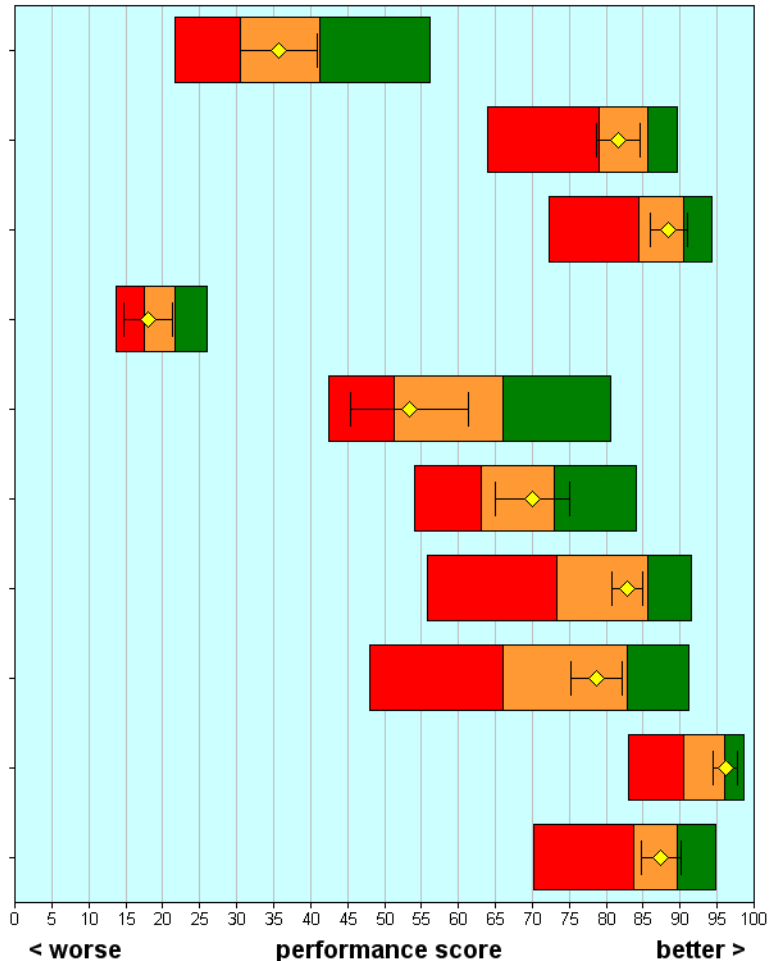
Did hospital staff do everything they could to help control pain?

How clean was the emergency department?

How clean were the toilets in the emergency department?

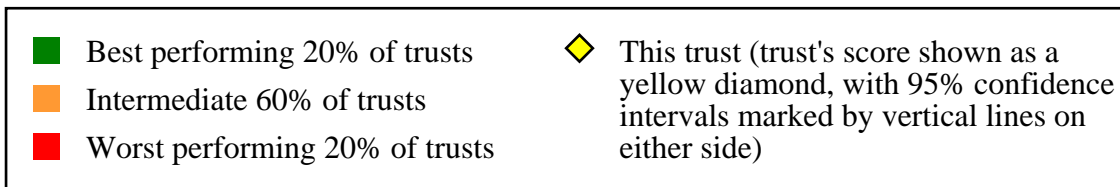
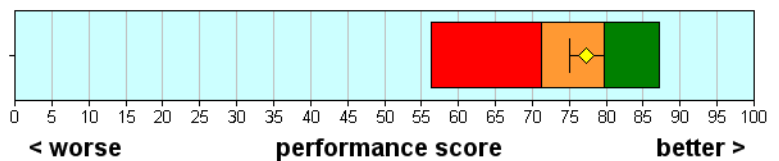
Did you feel threatened by other patients?

Were you treated with respect and dignity?



Overall impression

Overall, how would you rate the care received in the emergency department?



NHS Acute Trusts Survey of Emergency Departments 2003

Kings Lynn and Wisbech Hospitals NHS Trust

	Scores for this NHS Trust	95% Confidence Intervals		Highest score achieved (all Trusts) Threshold score for the best 20% of NHS Trusts		Number of respondents (this Trust)	
		Lower	Upper				
Access and waiting							
B1	How long did you wait for your priority to be assessed?	65	62	68	67	74	410
B2	Were you told your priority level?	40	35	45	45	73	370
B3	Was the priority system fair?	91	88	94	92	98	286
B4	How long did you wait to be examined?	64	61	67	68	79	412
B6	Overall how long were you in the emergency department?	74	72	76	73	85	413
E2	How long did you wait for tests to be carried out?	64	60	67	69	76	180
H2	How long did you wait to get to a room or ward and bed?	75	71	78	79	94	157
Safe, high quality, coordinated care							
C6	Did you have confidence and trust in the doctors and nurses?	85	82	88	87	91	431
C7	Did doctors and nurses know enough about your condition or treatment?	80	77	83	81	87	371
D6	Did different members of staff give conflicting information?	90	87	93	91	94	433
H6	Were you told about danger signals to watch for after leaving the emergency department?	64	57	70	58	73	167
H7	Were you told who to contact afterwards, if worried about condition/treatment?	85	79	90	86	92	180
Better information, more choice							
C2	Did a doctor/nurse explain condition/treatment?	75	72	79	82	88	404
D3	Were you given the right amount of information about your condition/treatment?	83	80	86	86	93	426
D7	Were you involved in decisions about your care and treatment?	76	72	80	80	87	395
E3	Were the results of tests explained?	64	58	71	79	86	170
H4	Were the purposes of medications explained?	93	89	97	92	97	89
H5	Were you informed of medication side effects to watch for?	41	30	52	49	64	66
Building relationships							
C1	Did you have enough time to discuss your problem with the doctor/nurse?	78	75	81	81	89	428
C3	Did doctors/nurses listen to what you had to say?	85	82	87	87	91	429
C4	Were doctors/nurses not telling you things you wanted to know?	94	92	96	95	97	426
C5	Did a doctor or nurse discuss any anxieties you had about your condition/treatment?	62	57	67	69	75	256
C8	Did doctors/nurses talk in front of you as if you weren't there?	90	88	93	91	95	428

NHS Acute Trusts Survey of Emergency Departments 2003

Kings Lynn and Wisbech Hospitals NHS Trust

	Scores for this NHS Trust	95% Confidence Intervals		Highest score achieved (all Trusts) Threshold score for the best 20% of NHS Trusts		Number of respondents (this Trust)	
		Lower	Upper				
Clean, comfortable, friendly place to be							
B5	Were you told how long you would have to wait to be examined?	36	30	41	41	56	311
D4	Were you given enough privacy when discussing your condition/treatment?	82	79	85	86	90	429
D5	Were you given enough privacy when being examined or treated?	88	86	91	91	94	431
F2	How much of the time were you in pain while in the emergency department?	18	15	21	22	26	283
F4	How long did you wait for pain medicine after requesting it?	53	45	61	66	81	81
F5	Did hospital staff do everything they could to help control pain?	70	65	75	73	84	247
G1	How clean was the emergency department?	83	81	85	86	91	412
G2	How clean were the toilets in the emergency department?	79	75	82	83	91	204
G3	Did you feel threatened by other patients?	96	94	98	96	99	434
J1	Were you treated with respect and dignity?	87	85	90	90	95	436
Overall impression							
J2	Overall, how would you rate the care received in the emergency department?	77	75	80	80	87	438

NHS Acute Trusts Survey of Emergency Departments 2003

Kings Lynn and Wisbech Hospitals NHS Trust

Background Information

The sample	This trust	All trusts
Number of respondents	444	59155
Response rate (percentage)	52	46

Demographic characteristics	This trust	All trusts
Gender (percentage)	(%)	(%)
Male	47	48
Female	53	52
Age group (percentage)	(%)	(%)
Aged 16 - 35	19	28
Aged 36 - 50	22	23
Aged 51 - 65	24	22
Aged 66 or older	35	27
Ethnic group (percentage)	(%)	(%)
White	97	89
Mixed	0	1
Asian or Asian British	0	3
Black or Black British	0	2
Chinese or other ethnic group	0	0
Not known	3	5